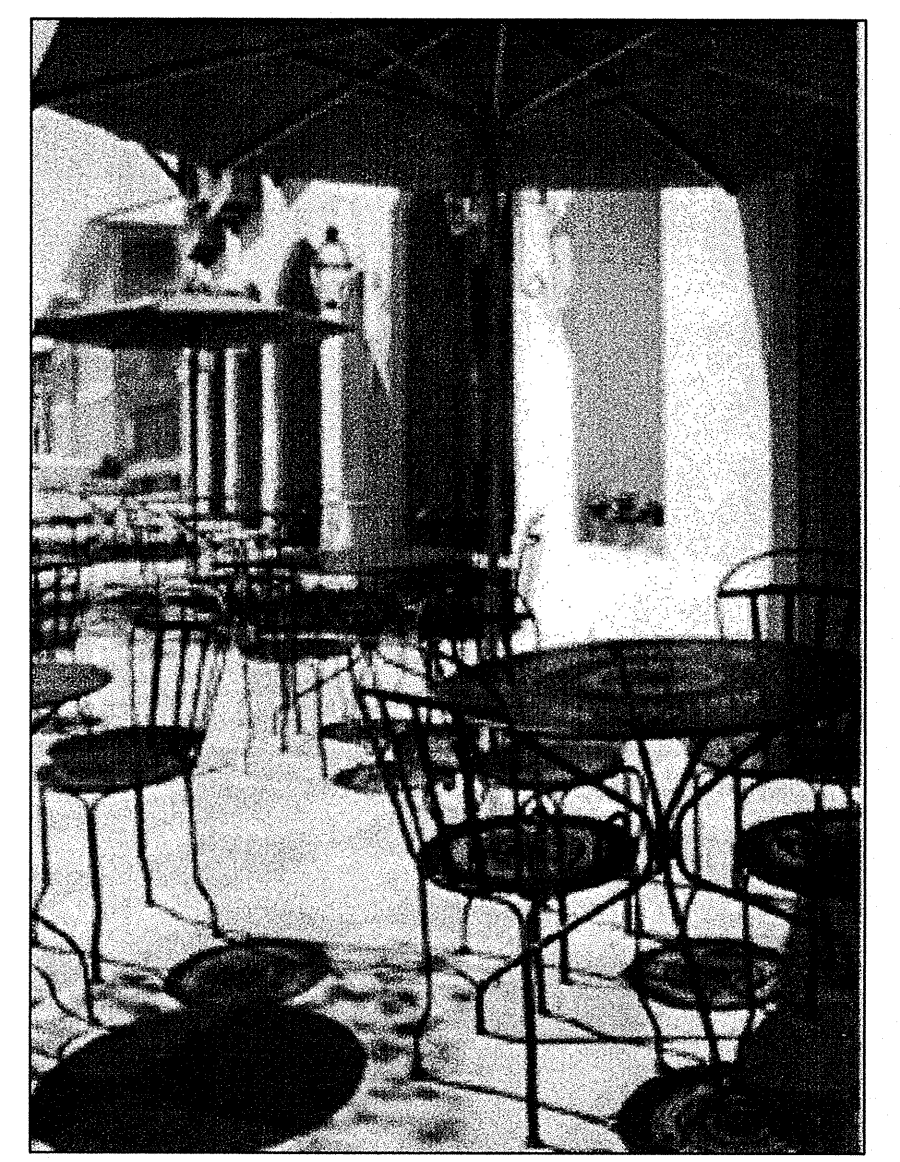


PLANT LIST:

KEY	QTY	BOTANICAL NAME	COMMON NAME	CAL.	HGT.	SPRD.	ROOT.
SHADE TREES							
A	4	Acer rubrum 'October Glory'	October Glory Red Maple	2 1/2-3"			B&B
E	16	Ulmus parviflora	Chinese Elm	2 1/2-3"			B&B
H	11	Celtis occidentalis	Hackberry	2 1/2-3"			B&B
L	4	Lagerstromieia indica 'Natchez'	Natchez Crape Myrtle		6-8'		B&B
B	3	Betula nigra 'Heritage'	Heritage River Birch		8-10'		B&B
DECIDUOUS SHRUBS							
SP	84	Spiraea japonica 'Little Princess'	Little Princess Spirea				#3 cont.
EVERGREEN SHRUBS							
TM	76	Taxus x media 'Hicksii'	Hicks Yew				#3 cont.
IC	55	Ilex crenata 'Green Lustre'	Green Luster Japanese Holly				#3 cont.
GROUND COVERS							
PA	250	Pennisetum aleopucruroides 'Hamlin'	Dwarf Fountain Grass				#1 cont.
LM	230	Liriope muscari 'Big Blue'	Big Blue Lilyturf				#1 cont.



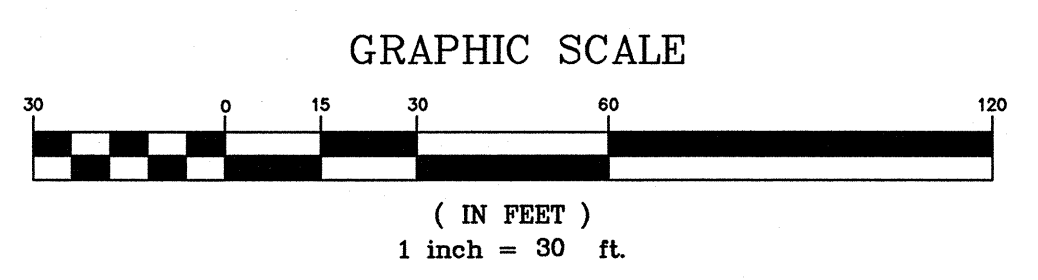
BISTRO TABLE & CHAIRS
NOT TO SCALE

OWNER CERTIFICATE

The undersigned agrees to execute all the features and requirements of this Site Development/Landscape Plan in accordance with the agreement between the Montgomery County Planning Board and the property owner.

By: _____ Date: _____

Call "Miss Utility" at 1-800-257-7777, 48 hours prior to the start of work. The excavator must notify all public utility companies with underground facilities in the area of proposed excavation and have those facilities located by the utility companies prior to commencing excavation. The excavator is responsible for compliance with requirements of Chapter 36A of the Montgomery County Code.



OWNER/DEVELOPER
DERRICK BROTHERS LLC
1001 ASHTON DRIVE
ASHTON, MD 20861
CONTACT: WILLARD DERRICK
PHONE: 301-774-9515

REVISIONS	
NO.	DESCRIPTION

TAX MAP JT 342 WSSC 224 NW 01

**LANDSCAPE PLAN
PROPOSED PARCEL F
DERRICK'S ADDITION TO ASHTON**
PART OF PARCEL E, L-19471 F-607, & L1876 F-51
8TH ELECTION DISTRICT - MONTGOMERY COUNTY - MARYLAND

	Macris, Hendricks & Glascock, P.A. Engineers ■ Planners Landscape Architects ■ Surveyors	Proj. Mgr. MDP	Designer VSB
	9220 Wightman Road, Suite 120 Montgomery Village, Maryland 20886-1279	Phone 301.670.0840 Fax 301.948.0693 www.mhgp.com	Date 10-24-06
		Project No. 98-307-12	Sheet 1 of 2

1:88307.dwg/LS_13_01.dwg, 24 X 36 in.mps, 10/24/2006 8:03:37 AM, plmim, COPYRIGHT ©2006 MACRIS, HENDRICKS & GLASCOCK, P.A.

